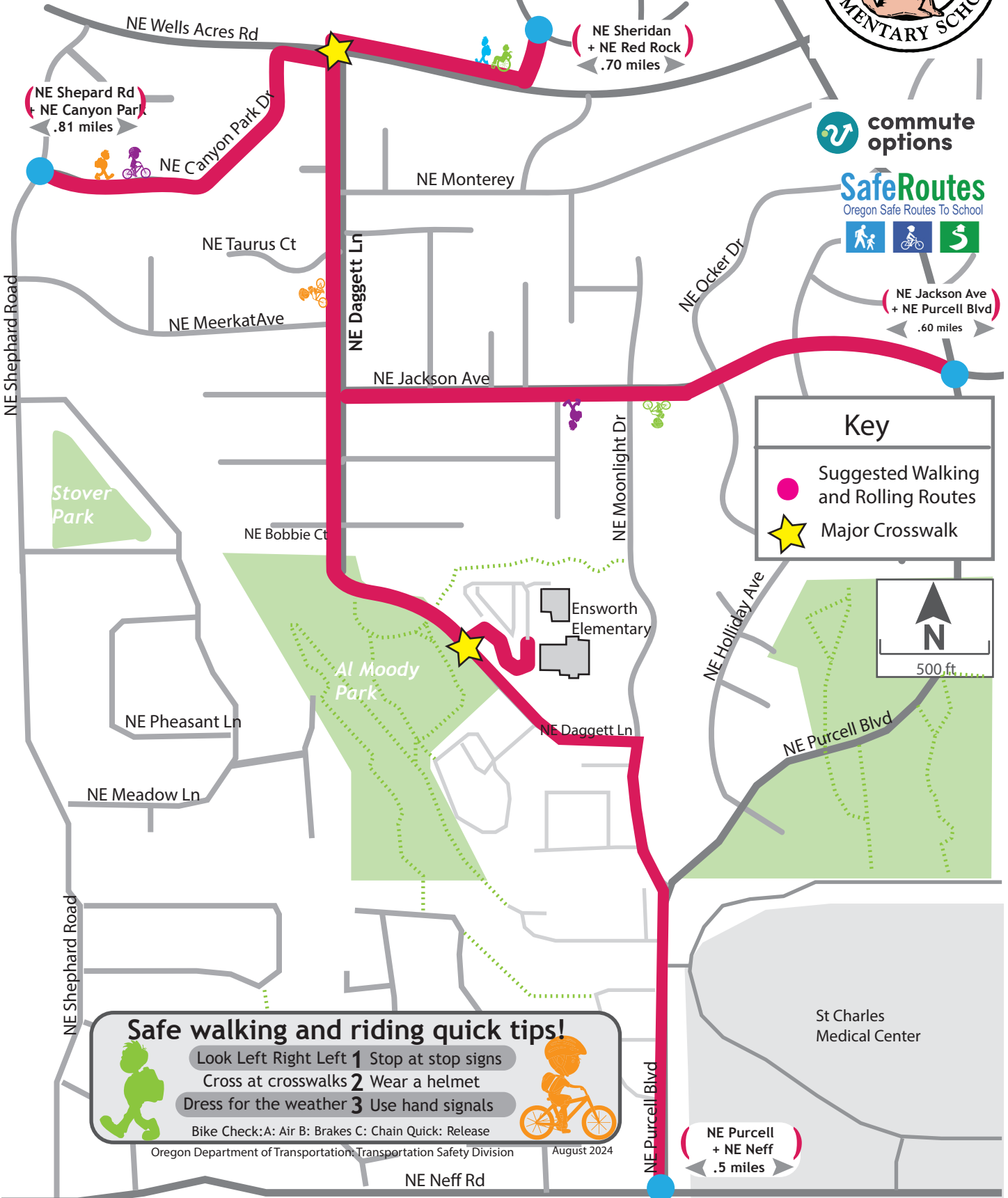


# SUGGESTED WALKING + ROLLING ROUTES TO SCHOOL



**Safe walking and riding quick tips!**

- Look Left Right Left **1** Stop at stop signs
- Cross at crosswalks **2** Wear a helmet
- Dress for the weather **3** Use hand signals

Bike Check: A: Air B: Brakes C: Chain Quick: Release

Oregon Department of Transportation Transportation Safety Division August 2024